

Product data sheet

TS 5000 ISM ECline



Overhead door closer system with guide rail for barrier-free, easy-to-open double leaf doors up to 1250 mm leaf width in accordance with DIN 18040 with integrated closing sequence control

AREAS OF APPLICATION

- Fire and smoke protection doors
- Right and left double leaf single-action doors
- Symmetrical and asymmetrical division of door possible
- Single-action doors up to 2500 mm hinge clearance and 1250 mm leaf width
- Minimum hinge clearance 1300 mm, minimum width of passive leaf 400 mm
- Door leaf installation hinge side
- Access for all in accordance with DIN 18040 up to EN5

PRODUCT FEATURES

- System with two door closers TS 5000 Ecline and an ISM guide rail
- Barrier-free in accordance with DIN 18040 up to EN5 (1250 mm leaf width)
- Closing force of EN3-5 with variable adjustment
- Can be used for right and left hand doors without conversion
- Closing sequence control holds the active leaf in the waiting position until the passive leaf is closed
- Hydraulic latching action which accelerates the door shortly before it is closed
- Closing speed can be individually adjusted
- Integrated back check, slows down doors that are thrown open forcefully
- Visual closing force display for easy control of the setting
- All functions can be adjusted from the front and less installation time compared to standard systems

TECHNICAL DATA

| | |
|---|-----------------------------------|
| Productname | TS 5000 ISM Ecline |
| Barrier-free in accordance with DIN 18040 up to leaf width (max.) in mm | 1250 mm |
| Leaf width (max.) | 1250 mm |
| Type of installation | Door leaf installation hinge side |
| Opening angle (max.) | 180 ° |
| Minimum hinge clearance | 1300 mm |
| Minimum passive leaf width | 400 mm |
| Suitability for fire protection doors | Yes |
| Closing force adjustable | Yes, stepless |
| Adjustable closing speed | Yes |
| Latching action adjustable | Yes, via valve |
| Back check integrated | Yes, hydraulically adjustable |

| | |
|--------------------------------------|----------|
| Position of closing force adjustment | Front |
| Visual closing force display | Yes |
| Hold-open function | Optional |
| Smoke switch integrated | No |
| Closing sequence control integrated | Yes |

VARIANTS / ORDER INFO

| Designation | Description | Ident-No. | Colour | Leaf width (max.) | Type of installation |
|-------------------------|--|-----------|-----------------------|-------------------|-----------------------------------|
| GEZE TS 5000 ISM Ecline | Overhead door closer system with guide rail for barrier-free, easy-to-open 2-leaf doors up to 1250 mm leaf width in accordance with DIN 18040 with integrated closing sequence control | N/A | according to RAL | 1250 mm | Door leaf installation hinge side |
| GEZE TS 5000 ISM Ecline | Overhead door closer system with guide rail for barrier-free, easy-to-open 2-leaf doors up to 1250 mm leaf width in accordance with DIN 18040 with integrated closing sequence control | N/A | silver-coloured | 1250 mm | Door leaf installation hinge side |
| GEZE TS 5000 ISM Ecline | Overhead door closer system with guide rail for barrier-free, easy-to-open 2-leaf doors up to 1250 mm leaf width in accordance with DIN 18040 with integrated closing sequence control | N/A | white RAL 9016 | 1250 mm | Door leaf installation hinge side |
| GEZE TS 5000 ISM Ecline | Overhead door closer system with guide rail for barrier-free, easy-to-open 2-leaf doors up to 1250 mm leaf width in accordance with DIN 18040 with integrated closing sequence control | N/A | Stainless steel optic | 1250 mm | Door leaf installation hinge side |

PART

ISM GUIDE RAIL TS 5000

With closing sequence control and levers



| Designation | Description | Ident-No. | Colour | Dimensions |
|------------------------|---|-----------|-----------------------|-------------------|
| ISM guide rail TS 5000 | continuous, with integrated closing sequence control and levers | 115592 | Stainless steel optic | 2630 x 40 x 30 mm |
| ISM guide rail TS 5000 | continuous, with integrated closing sequence control and levers | 115549 | silver-coloured | 2630 x 40 x 30 mm |
| ISM guide rail TS 5000 | continuous, with integrated closing sequence control and levers | 115591 | white RAL 9016 | 2630 x 40 x 30 mm |
| ISM guide rail TS 5000 | continuous, with integrated closing sequence control and levers | 115593 | according to RAL | 2630 x 40 x 30 mm |

CLOSER BODY TS 5000 ECLINE

Main body for overhead door closer with guide rail EN 3-5 with back check



| Designation | Description | Ident-No. | Colour | Closing force in accordance with EN 1154 | Dimensions |
|----------------------------|--|-----------|----------------------------|--|------------------|
| TS 5000 ECLine door closer | Closing force EN 3-5, with back check (without guide rail and lever) | 143640 | silver-coloured | EN 3 - 5 | 287 x 47 x 60 mm |
| TS 5000 ECLine door closer | Closing force EN 3-5, with back check (without guide rail and lever) | 143642 | Stainless steel face plate | EN 3 - 5 | 287 x 47 x 60 mm |
| TS 5000 ECLine door closer | Closing force EN 3-5, with back check (without guide rail and lever) | 143641 | white RAL 9016 | EN 3 - 5 | 287 x 47 x 60 mm |
| TS 5000 ECLine door closer | Closing force EN 3-5, with back check (without guide rail and lever) | 143643 | according to RAL | EN 3 - 5 | 287 x 47 x 60 mm |

ACCESSORIES**CB FLEX**

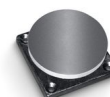
Carry bar for safe closing of double leaf fire protection doors



| Designation | Description | Ident-No. | Colour |
|----------------|---|-----------|------------------|
| GEZE CB flex * | for use on all 2-leaf rebated doors. Concealed length adjustment with variable adjustment up to 210 mm leaf protrusion, hinged mechanism not visible, profile can be shortened if necessary, with attachment material | 182652 | white RAL 9016 |
| GEZE CB flex | for use on all 2-leaf rebated doors. Concealed length adjustment with variable adjustment up to 210 mm leaf protrusion, hinged mechanism not visible, profile can be shortened if necessary, with attachment material | 153602 | silver-coloured |
| GEZE CB flex | for use on all 2-leaf rebated doors. Concealed length adjustment with variable adjustment up to 210 mm leaf protrusion, hinged mechanism not visible, profile can be shortened if necessary, with attachment material | 153728 | according to RAL |

MAGNETIC COUNTERPLATE BASIC MODEL *

Standard version, rubber support



| Designation | Description | Ident-No. | Dimensions |
|-------------------------------|----------------------------------|-----------|-----------------|
| GEZE magnetic counter plate * | Standard version, rubber support | 115954 | 55 x 55 x 18 mm |

MAGNETIC COUNTERPLATE SPRING BUFFER *

Version with spring buffer



| Designation | Description | Ident-No. | Dimensions |
|-------------------------------|----------------------------|-----------|-----------------|
| GEZE magnetic counter plate * | Version with spring buffer | 115955 | 55 x 55 x 79 mm |

MAGNETIC COUNTERPLATE JOINT *

Version with adjustable joint



| Designation | Description | Ident-No. | Dimensions |
|-------------------------------|-------------------------------|-----------|-----------------|
| GEZE magnetic counter plate * | Version with adjustable joint | 115956 | 55 x 55 x 50 mm |

HOLD-OPEN MAGNET BASIC MODEL *

With screw attachment on the rear and without mounting plate



| Designation | Description | Ident-No. | Dimensions | Type of installation |
|------------------------------|--|-----------|-----------------|-----------------------------|
| GEZE door hold-open magnet * | Basic model, without mounting plate, screw fixture on the back | 115830 | 50 x 50 x 30 mm | Surface-mounted, Integrated |

HOLD-OPEN MAGNET FLEXIBLE 185 MM *

For wall or ceiling installation with stand pipe 185 mm



| Designation | Description | Ident-No. | Dimensions | Type of installation |
|------------------------------|---|-----------|------------------|----------------------|
| GEZE door hold-open magnet * | Wall/ceiling mounting, standpipe 185 mm, flexible up to 110 mm, easy to shorten, magnetic head bendable through 90° | 115952 | 90 x 80 x 185 mm | Wall, Ceiling, Floor |

HOLD-OPEN MAGNET FLEXIBLE 335 MM *

For wall or ceiling installation with stand pipe 335 mm



| Designation | Description | Ident-No. | Dimensions | Type of installation |
|------------------------------|--|-----------|------------------|----------------------|
| GEZE door hold-open magnet * | Wall/ceiling mounting, standpipe 335 mm, flexible up to 110mm, easy to shorten, magnetic head bendable through 90° | 115953 | 90 x 80 x 335 mm | Wall, Ceiling, Floor |

HOLD-OPEN MAGNET WALL INSTALLATION

For wall installation with base plate



| Designation | Description | Ident-No. | Dimensions | Type of installation |
|----------------------------|--------------------------------|-----------|-----------------|----------------------|
| GEZE door hold-open magnet | Wall mounting, with base plate | 115829 | 93 x 65 x 33 mm | Surface-mounted |

HOLD-OPEN MAGNET WALL INSTALLATION 65 MM *

For wall installation with base 65 mm



| Designation | Description | Ident-No. | Dimensions | Type of installation |
|------------------------------|-------------------------------|-----------|-----------------|----------------------|
| GEZE door hold-open magnet * | Wall mounting with base 65 mm | 155573 | 70 x 70 x 65 mm | Wall |

HOLD-OPEN MAGNET WALL INSTALLATION SURFACE-MOUNTED *

For wall installation surface mounting or floor mounting with accessories and base



| Designation | Description | Ident-No. | Dimensions | Type of installation |
|------------------------------|--|-----------|------------------|------------------------|
| GEZE door hold-open magnet * | Wall mounting surface mounting or floor mounting with base accessories (not included in scope of delivery) | 155569 | 110 x 85 x 40 mm | Surface-mounted, Floor |

HOLD-OPEN MAGNET WALL INSTALLATION FLUSH-MOUNTED *

For wall installation flush-mounted



| Designation | Description | Ident-No. | Dimensions | Type of installation |
|------------------------------|-----------------------------|-----------|-----------------|----------------------------|
| GEZE door hold-open magnet * | Flush-mounted wall mounting | 155567 | 85 x 85 x 30 mm | Flush-mounted installation |

KIT ECLINE ISM / ISM BG *

Power storage for use on the active leaf in double leaf ISM and ISM BG guide rails



| Designation | Description | Ident-No. | Colour |
|---------------------------|--|-----------|--------|
| Kit Ecline ISM / ISM BG * | Power storage for use on the active leaf in double leaf ISM and ISM BG guide rails | 154767 | black |

GC 152 *

Smoke detector for GEZE hold-open systems



| Designation | Description | Ident-No. | Colour | Supply voltage | Type of installation |
|------------------------------|--|-----------|----------------|----------------|----------------------|
| GEZE smoke detector GC 152 * | Complete with base, 24 V DC, 20 mA, tested in accordance with EN54-7, with general approval for use with all GEZE hold-open systems FA GC 150, integrated line monitoring, conform with DIN EN 14637 | 139850 | white RAL 9010 | 24 V DC | Ceiling |

GC 153 *

Thermal detector for GEZE hold-open systems



| Designation | Description | Ident-No. | Colour | Supply voltage | Type of installation |
|--------------------------------|--|-----------|--------|----------------|----------------------|
| GEZE thermal detector GC 153 * | Complete with base, 24 V DC, 20 mA, tested in accordance with EN54-5, with general approval for use with all GEZE hold-open systems FA GC 150, integrated line monitoring, conform with DIN EN 14637 | 139881 | white | 24 V DC | Ceiling |

AS 500

Manual trigger switch for the manual release of electrically controlled hold-open devices



| Designation | Description | Ident-No. | Colour | Dimensions | Operating voltage |
|-------------------------------------|---|-----------|------------------|-----------------|-------------------|
| AS 500 manual trigger switch | for the manual release of electrically controlled hold-open devices including terminating resistor for line monitoring | 116266 | alpine white/red | 80 x 80 x 9 mm | 24 V DC |
| AS 500 manual trigger switch, glass | for the manual release of electrically controlled hold-open devices including terminating resistor for line monitoring, glass pane and 5 interchangeable labels | 120880 | alpine white/red | 80 x 80 x 21 mm | 24 V DC |

MECHANICAL HOLD-OPEN UNIT

For ISM guide rail



| Designation | Description | Ident-No. |
|---------------------------|---|-----------|
| Mechanical hold-open unit | for ISM-guide rail / ISM-guide rail BG, retention force adjustable, can be overridden | 118437 |

COVER CAP DOOR CLOSER *

For TS 5000 (L)/TS 4000, can only be used for door leaf installation



| Designation | Description | Ident-No. | Colour | Dimensions |
|-------------------------|--|-----------|------------------|--------------------|
| Cover cap door closer * | for TS 5000 / TS 5000 L / TS 4000, can only be used for door leaf installation | 067726 | white RAL 9016 | 298 x 55 x 67.2 mm |
| Cover cap door closer * | for TS 5000 / TS 5000 L / TS 4000, can only be used for door leaf installation | 072696 | Stainless steel | 298 x 55 x 67.2 mm |
| Cover cap door closer * | for TS 5000 / TS 5000 L / TS 4000, can only be used for door leaf installation | 067724 | silver-coloured | 298 x 55 x 67.2 mm |
| Cover cap door closer * | for TS 5000 / TS 5000 L / TS 4000, can only be used for door leaf installation | 000756 | according to RAL | 298 x 55 x 67.2 mm |
| Cover cap door closer * | for TS 5000 / TS 5000 L / TS 4000, can only be used for door leaf installation | 067725 | dark bronze | 298 x 55 x 67.2 mm |

RSZ 7 *

Extendable smoke switch control unit for all GEZE hold-open devices

GEZE

| Designation | Description | Ident-No. | Colour | Supply voltage |
|-----------------------------------|--|-----------|-----------------------|----------------|
| RSZ 7 smoke switch control unit * | Smoke switch control unit for all GEZE hold-open devices | 185231 | according to RAL | 230 V |
| RSZ 7 smoke switch control unit * | Smoke switch control unit for all GEZE hold-open devices | 184196 | Stainless steel optic | 230 V |
| RSZ 7 smoke switch control unit * | Smoke switch control unit for all GEZE hold-open devices | 181025 | silver-coloured | 230 V |
| RSZ 7 smoke switch control unit * | Smoke switch control unit for all GEZE hold-open devices | 184195 | white RAL 9016 | 230 V |

FLEXIBLE OPENING RESTRICTOR

For E and R guide rails, single and double leaf



| Designation | Description | Ident-No. |
|-----------------------------|--|-----------|
| Flexible opening restrictor | for guide rail 1-leaf: TS 5000 E/R/RFS (door leaf installation), Boxer E; 2-leaf: all E/R/ISM variants TS 5000 (incl. VPK) and Boxer | 145311 |

COVER CAP DOOR CLOSER *

For TS 4000/5000, curved shape

| Designation | Description | Ident-No. | Colour | Dimensions |
|-------------------------|---|-----------|--------------------------|------------------|
| Cover cap door closer * | for TS 5000/TS 4000, semi-radial, can only be used for door leaf installation | 092943 | Polished stainless steel | 337 x 51 x 72 mm |
| Cover cap door closer * | for TS 5000/TS 4000, semi-radial, can only be used for door leaf installation | 092944 | Satin stainless steel | 337 x 51 x 72 mm |

COVER CAP DOOR CLOSER *

For TS 4000/5000, rectangular shape

| Designation | Description | Ident-No. | Colour | Dimensions |
|-------------------------|--|-----------|--------------------------|------------------|
| Cover cap door closer * | for TS 5000 / TS 4000, square, can only be used for door leaf installation | 092938 | Polished stainless steel | 298 x 51 x 72 mm |
| Cover cap door closer * | for TS 5000 / TS 4000, square, can only be used for door leaf installation | 092939 | Satin stainless steel | 298 x 51 x 72 mm |

INSTALLATION MATERIAL

MOUNTING PLATE GUIDE RAIL

For ISM and E-ISM guide rail



| Designation | Description | Ident-No. | Colour |
|---------------------------|----------------------------|-----------|------------------|
| Mounting plate guide rail | for ISM / E-ISM guide rail | 118702 | silver-coloured |
| Mounting plate guide rail | for ISM / E-ISM guide rail | 118703 | according to RAL |

MOUNTING PLATE DOOR CLOSER

For TS 5000 and TS 4000 with hole pattern in accordance with DIN EN 1154 Supplement 2



| Designation | Description | Ident-No. | Colour |
|----------------------------|---|-----------|-----------------------|
| Mounting plate door closer | for TS 5000/TS 4000 with hole pattern according to DIN EN 1154 Supplement 1 | 068627 | white RAL 9016 |
| Mounting plate door closer | for TS 5000/TS 4000 with hole pattern according to DIN EN 1154 Supplement 1 | 057956 | Galvanised |
| Mounting plate door closer | for TS 5000/TS 4000 with hole pattern according to DIN EN 1154 Supplement 1 | 029176 | according to RAL |
| Mounting plate door closer | for TS 5000/TS 4000 with hole pattern according to DIN EN 1154 Supplement 1 | 049185 | silver-coloured |
| Mounting plate door closer | for TS 5000/TS 4000 with hole pattern according to DIN EN 1154 Supplement 1 | 137725 | Stainless steel optic |
| Mounting plate door closer | for TS 5000/TS 4000 with hole pattern according to DIN EN 1154 Supplement 1 | 052351 | dark bronze |

MOUNTING PLATE DOOR CLOSER *

For TS 5000 and TS 4000 with hole pattern in accordance with DIN EN 1154 Supplement 2



| Designation | Description | Ident-No. |
|------------------|---|-----------|
| Mounting plate * | for TS 5000/TS 4000 with hole pattern according to DIN EN 1154 Supplement 1 | 083992 |

* The products designated above may vary in form, type, characteristics, function, or availability depending on the country. Please get in touch with your GEZE contact person if you have any questions.