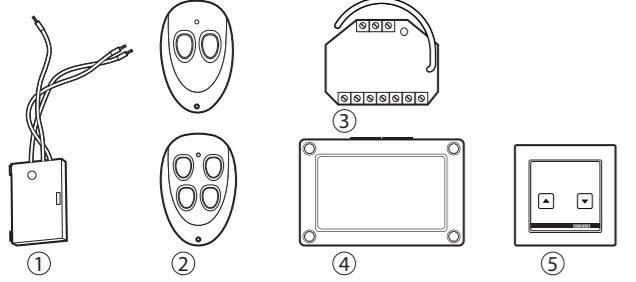


GEZE
Wireless programme
230 V window drives

EN Mounting and
service instructions

132673-05

1 Wireless programme 230 V window drives



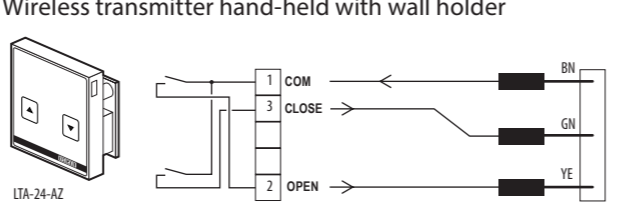
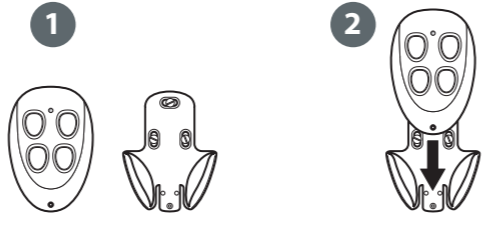
- 1 Wireless transmitter module WTM (Id. No. 131212)
- 2 Wireless transmitter hand-held WTH-2 (Id. No. 131210)
Wireless transmitter hand-held WTH-4 (Id. No. 131211)
- 3 Wireless receiver module WRM-230 (Id. No. 131215)
- 4 Wireless receiver module WRM-230B (Id. No. 131216)
- 5 Ventilation switch LTA-24-AZ, flush-mounted (Id. No. 129393)

2 Function description

- 2.1 "OPEN"/"CLOSE" command
 - ▶ In order to open or close windows press the correspondingly taught button on the transmitter.
- 2.2 "STOP" command
 - ▶ In order to stop windows during opening or closing press the corresponding opposite button on the transmitter.

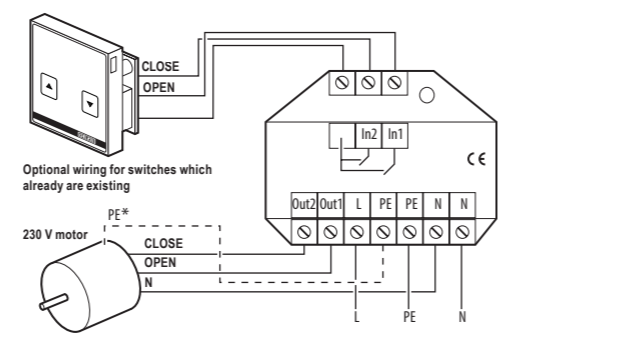
3 Mounting / Connection

3.1 Connecting the wireless transmitter

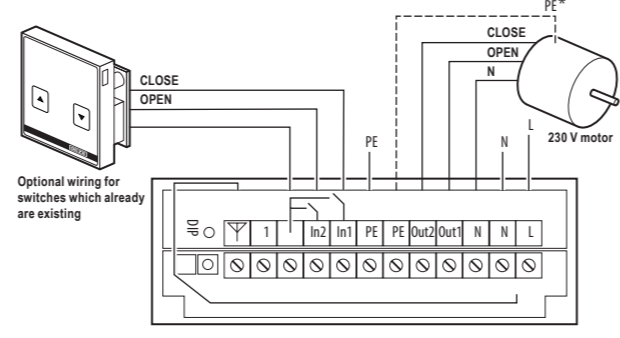


Connecting the wireless transmitter module WTM to the ventilation switch LTA-24-AZ

3.2 Connecting the wireless receiver module



Connecting the wireless receiver module WRM-230 to the 230 V motor

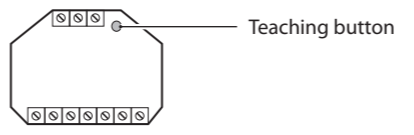


Connecting the wireless receiver module WRM-230B to the 230 V motor

* If PE connection necessary on the drive.

3.3 Wireless receiver module operating mode

! For safety reasons, the operating mode is set at the wireless receiver module WRM-230 via the teaching button. The operating mode has to be set correctly before initial commissioning.



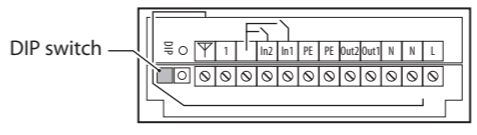
Teaching button at the wireless receiver module WRM-230

- ▶ Press the teaching button at the wireless receiver module for approx. 1 second.
 - The wireless receiver module beeps 1 x briefly every 3 seconds.
- ▶ Press the teaching button again for approx. 1 second.
 - The set operating mode is output acoustically:
 - The wireless receiver module beeps 1 x briefly every 3 seconds: Operation without self-locking.
 - The wireless receiver module beeps 2 x briefly every 3 seconds: Operation with self-locking.

! The continuous signal drops out after 10 minutes.

- ▶ In order to change the operating mode, press the teaching button at the wireless receiver module for approx. 1 second.
- ▶ In order to store the operating mode, press the teaching button at the wireless receiver module for approx. 3 seconds.
 - The wireless receiver module beeps 1 x long as confirmation.
 - The operating mode at the wireless receiver module has been taught successfully.

! The operating mode at the wireless receiver module WRM-230B is set by means of the DIP switch that has to be set correctly before initial commissioning.



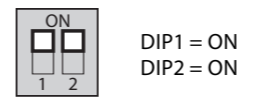
DIP switch at the wireless receiver module WRM-230B

Operation without self-locking:
▫ Activation as long as the wireless key is pressed.



! Wireless signal drops after approx. 10 seconds

Operation with self-locking:
▫ Activation triggers permanent signal for self-locking operation.



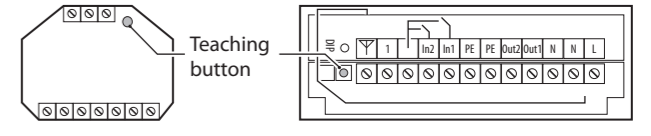
! The continuous signal drops out after 10 minutes.

4 Commissioning

4.1 Teaching wireless transmitters

! Set DIP switch (WRM-230B) before teach-in

For safety reasons, the wireless transmitter can only be taught during the first 5 minutes after the operating voltage has been switched on at the drive.



Teaching button at the wireless receiver module WRM-230 and WRM-230B

- ▶ Press the teaching button at the wireless receiver module for approx. 1 second in order to activate teaching.
 - The wireless receiver module beeps 1 x briefly every 3 seconds.
 - The memory for the "OPEN" function is selected.
- ▶ Press the corresponding button for "OPEN" at the wireless transmitter briefly within 30 seconds.
 - The wireless receiver module beeps 1 x long as confirmation and then 2 x every 3 seconds.
 - The memory for the "CLOSE" function is selected.
- ▶ Press the corresponding button for "CLOSE" at the wireless transmitter briefly within 30 seconds.
 - The wireless receiver module beeps 1 x long as confirmation.
 - The wireless receiver module has been taught successfully and terminates teaching mode automatically.

If further wireless transmitters are to be taught, repeat Steps. A maximum of 85 wireless transmitters can be taught per wireless receiver module. If more than 85 wireless transmitters are to be taught, additional wireless receiver modules are to be connected.

4.2 Deleting wireless transmitters

For safety reasons, the wireless transmitter can only be deleted during the first 5 minutes after the operating voltage has been switched on.

- ▶ Press the teaching button at the wireless receiver module for approx. 10 seconds.
 - The wireless receiver module beeps 1 x long as confirmation.
 - All the taught wireless transmitter have been deleted successfully from the memory.

Taught wireless transmitters can only be overwritten. If a taught wireless transmitter is to be deleted, all the taught wireless transmitters have to be deleted.

5 Maintenance / Battery change

5.1 Wireless transmitter hand-held

The battery durable life is designed for approx. 10,000 operations. When the battery power declines, the LED begins to flash during operation. The battery should then be replaced by a new A23/MN21/P23GA battery (Id-Nr. 131217).

5.2 Wireless transmitter module

The battery durable life is designed for approx. 100,000 operations.

When the battery power declines, the LED begins to flash during operation. The battery should then be replaced by a new CR 2032 battery (Id. No. 131218).

6 Technical data

Frequency:	433.92 MHz	
Security:	Rolling code	
Range:	approx. 30 m	
Power supply:	WTH:	12 V, A23/MN21/P23GA battery, 50 mAh
	WTM:	3 V, CR 2032 battery, 220 mAh
Relay contact:	WRM-230:	230 V, 3.9 mA (power consumption during standby)
	WRM-230B:	230 V, 5.6 mA (power consumption during standby)
Relay contact:	WRM-230:	2 outputs 5 A, 230 V
	WRM-230B:	2 outputs 5 A, 230 V
Dimensions (W x H x D):	WTH:	78 x 51 x 23 mm
	WTM:	44 x 30 x 11 mm
	WRM-230:	52 x 47 x 23 mm
	WRM-230B:	130 x 80 x 35 mm
Degree of protection:	WTH:	IP 54
	WTM:	IP 20
	WRM-230 WRM-230B	IP 20 IP 54
Storage temperature:	-20 to +85 °C	
Operating temperature:	0 to +50 °C	
Humidity:	max. 95%, non-condensing	

7 Declaration of conformity

GEZE herewith states that the

- Wireless transmitting module WTM
- Hand-held transmitter WTH-2 / WTH-4
- Receiving module WRM-230 / 230B

corresponds to Directive 2014/53/EU. The complete text of the EU Declaration of Conformity is available at the following internet address: www.geze.com.

Germany
GEZE GmbH
Niederlassung Süd-West
Tel. +49 (0) 7152 203 594
E-Mail: leonberg.de@geze.com
GEZE GmbH
Niederlassung Süd-Ost
Tel. +49 (0) 7152 203 6440
E-Mail: muenchen.de@geze.com
GEZE GmbH
Niederlassung Ost
Tel. +49 (0) 7152 203 6840
E-Mail: berlin.de@geze.com
GEZE GmbH
Niederlassung Mitte/Luxemburg
Tel. +49 (0) 7152 203 6888
E-Mail: frankfurt.de@geze.com
GEZE GmbH
Niederlassung West
Tel. +49 (0) 7152 203 6770
E-Mail: duesseldorf.de@geze.com
GEZE GmbH
Niederlassung Nord
Tel. +49 (0) 7152 203 6600
E-Mail: hamburg.de@geze.com
GEZE Service GmbH
Tel. +49 (0) 1802 923392
E-Mail: service-info.de@geze.com
Austria
GEZE Austria
E-Mail: austria.at@geze.com
www.geze.at
Baltic States
Lithuania / Latvia / Estonia
E-Mail: baltic-states@geze.com
Benelux
GEZE Benelux B.V.
E-Mail: benelux.nl@geze.com
www.geze.be
www.geze.nl
Bulgaria
GEZE Bulgaria - Trade
E-Mail: office-bulgaria@geze.com
www.geze.bg

China
GEZE Industries (Tianjin) Co., Ltd.
E-Mail: chinasales@geze.com.cn
www.geze.com.cn
GEZE Industries (Tianjin) Co., Ltd.
Branch Office Shanghai
E-Mail: chinasales@geze.com.cn
www.geze.com.cn
GEZE Industries (Tianjin) Co., Ltd.
Branch Office Guangzhou
E-Mail: chinasales@geze.com.cn
www.geze.com.cn
GEZE Industries (Tianjin) Co., Ltd.
Branch Office Beijing
E-Mail: chinasales@geze.com.cn
www.geze.com.cn
France
GEZE France S.A.R.L.
E-Mail: france.fr@geze.com
www.geze.fr
Hungary
GEZE Hungary Kft.
E-Mail: office-hungary@geze.com
www.geze.hu
Iberia
GEZE Iberia S.R.L.
E-Mail: info.es@geze.com
www.geze.es
India
GEZE India Private Ltd.
E-Mail: office-india@geze.com
www.geze.in
Italy
GEZE Italia S.r.l.
E-Mail: italia.it@geze.com
www.geze.it
GEZE Engineering Roma S.r.l.
E-Mail: italia.it@geze.com
www.geze.it
Korea
GEZE Korea Ltd.
E-Mail: info.kr@geze.com
www.geze.com
Poland
GEZE Polska Sp.z o.o.
E-Mail: geze.pl@geze.com
www.geze.pl

Romania
GEZE Romania S.R.L.
E-Mail: office-romania@geze.com
www.geze.ro
Russia
OOO GEZE RUS
E-Mail: office-russia@geze.com
www.geze.ru
Scandinavia Sweden
GEZE Scandinavia AB
E-Mail: sverige.se@geze.com
www.geze.se
Scandinavia Norway
GEZE Scandinavia AB avd. Norge
E-Mail: norges.se@geze.com
www.geze.no
Scandinavia Denmark
GEZE Danmark
E-Mail: danmark.se@geze.com
www.geze.dk
Singapore
GEZE (Asia Pacific) Pte. Ltd.
E-Mail: gezesea@geze.com.sg
www.geze.com
South Africa
GEZE South Africa (Pty) Ltd.
E-Mail: info@gezesa.co.za
www.geze.co.za
Switzerland
GEZE Schweiz AG
E-Mail: schweiz.ch@geze.com
www.geze.ch
Turkey
GEZE Kapi ve Pencere Sistemleri
E-Mail: office-turkey@geze.com
www.geze.com
Ukraine
LLC GEZE Ukraine
E-Mail: office-ukraine@geze.com
www.geze.ua
United Arab Emirates/GCC
GEZE Middle East
E-Mail: gezeme@geze.com
www.geze.ae
United Kingdom
GEZE UK Ltd.
E-Mail: info.uk@geze.com
www.geze.com

GEZE GmbH
Reinhold-Vöster-Straße 2129
71229 Leonberg
Germany

Tel.: 0049 7152 203 0
Fax: 0049 7152 203 310
www.geze.com

